

## Inside the nest

Tiny tunnels lead into the nest.

Each nest is a mass of tunnels and rooms.

## Types of ant

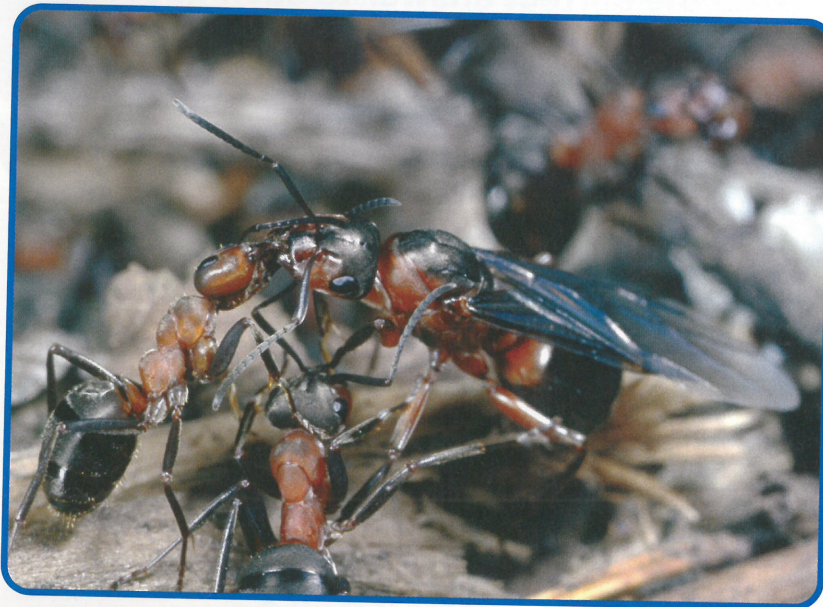
In every nest there are three types of ant.

The biggest are the queen ants.

Queen ants have wings.

The big males also have wings, but aren't quite as big.

The small ants are the worker ants, and they don't have wings.



## Who does what?

A queen ant lives in one room of the nest. She stays in her room all the time and lays hundreds of eggs.

The big male ants mate with a queen, then die.

The worker ants collect the food. They feed the young ants, keep the nest clean, and dig more rooms and tunnels as they are needed.

They also keep away ants from other nests.

## Do you remember?

Green  
Yellow  
Blue

Copy these sentences. Fill each gap.

1. Inside an ants' nest is a mass of \_\_\_\_\_ and rooms.
2. There are \_\_\_\_\_ types of ant.
3. The biggest ants are the \_\_\_\_\_.
4. \_\_\_\_\_ ants are the smallest.
5. A queen ant's main job is to lay the \_\_\_\_\_.

## More to think about

Yellow  
Blue

1. Write a sentence to answer each question.
  - a) What are the three types of ant?
  - b) Which two types of ant have wings?
  - c) Who looks after the young ants?
  - d) Why do there need to be so many worker ants for each queen?
2. Find two facts for each type of ant to complete the table.

Queen ant	Male ant	Worker ant

## Now try these

Blue

1. Imagine you suddenly shrink and become ant-sized. You explore an ants' nest. Write a report about what you find.
2. Ants are tiny, but when they work together they can do things they couldn't manage by themselves. Write down five things you can do alone, and five things you can do only with other people to help.